

# General Specifications

## Models 4914 and 4915 Field Mounting Indicators

GS 01S01B02-00E

The Model 4914 and 4915 Field Mounting Indicators receive 4 to 20 mA DC current signals transmitted by electronic transmitters, and indicate process measurement values. Explosionproof versions are available.

### ■ STANDARD SPECIFICATIONS

#### MODEL 4914-08

##### Input Signal:

4 to 20 mA DC

##### Input Resistance:

5 Ω or less

##### Scale:

196 mm (7.7 inches) circular scale, single graduations and single markings. Can be marked with engineering units as specified.

##### Accuracy:

±1.5 % of full scale value

##### Operating Temperature Range:

-10 to 60 °C (14 and 140 °F)

##### Insulation Resistance:

Between input terminals and case: 100 MΩ at 500 V DC.

##### Dielectric Strength:

Between input terminals and case: 500 V AC for 1 minute.

##### Mounting:

Nominal 50 mm (2 inches) pipe or surface.

##### Electrical Classification:

TIIS flameproof type, d2G4

##### Case and Cover:

Die cast aluminum, finished with baked polyurethane paint. Case: gray, cover: dark blue

##### Electrical Connection:

JIS G1/2 female

##### Weight:

3.3 kg (7.3 lb)

#### MODEL 4915-08

##### Operating Temperature Range:

General use type: -20 to 60 °C (-4 to 140 °F)

TIIS intrinsically safe type: -10 to 60 °C (14 to 140 °F)

##### Electrical Classification:

Model 4915-08□1: General use type

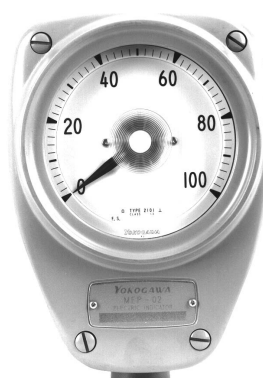
Model 4915-08□6: TIIS intrinsically safe type, i3aG5

Standard TIIS intrinsically safe type instrument is not useable in acetylene gas atmospheres.

##### Weight:

2 kg (4.4 lb)

Other specifications are the same as those for Model 4914-08 above.



Model 4915



Model 4914

### ■ MODEL AND SUFFIX CODES

Model	Suffix Codes	Description
4914	.....	Field mounting indicator TIIS flameproof type
4915	.....	Field mounting indicator general use type TIIS intrinsically safe type
Input Signal	-08 .....	4 to 20 mA DC
Mounting	1 .....	Nominal 50 mm (2 inches) pipe
	2 .....	Surface
Construction	1 .....	General use type
	2 .....	TIIS flame-proof type
	6 .....	TIIS intrinsically safe type
Options	/ □ / □	

T01E.EPS

### ■ OPTIONS

##### Scale:

Single graduations, double markings is available on request.

##### Special Cover Color:

Specify in color block ☐ by color code.

Option code: SCF-□P

##### Flameproof Packing Adapter:

For Model 4914-08 only. Used to provide flameproof passage for external cable to terminal box of JIS flameproof type. Not necessary in flameproof metal conduit wiring. Cable diameter limits 8.8 to 10.7 mm. Protective pipe connection (protects against mechanical damage to cable) G1/2 female.

Option code: PG1

##### Epoxy resin coating:

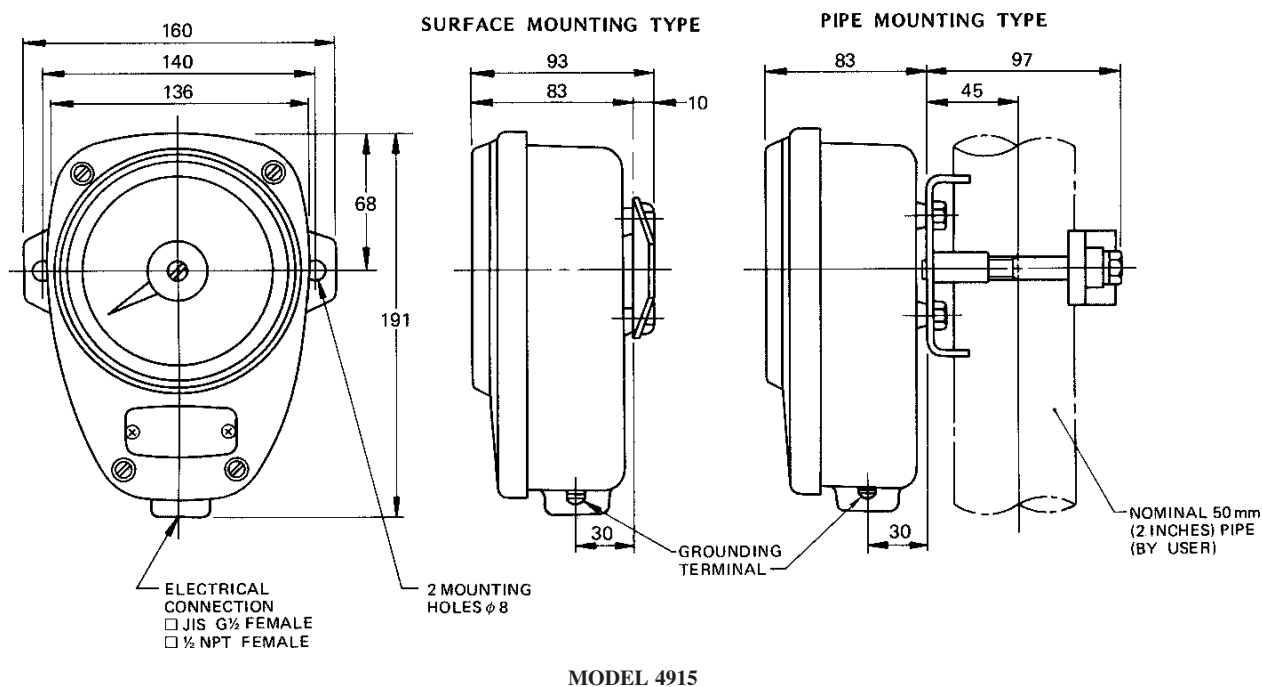
Option code: EPF

##### Stainless steel tag plate:

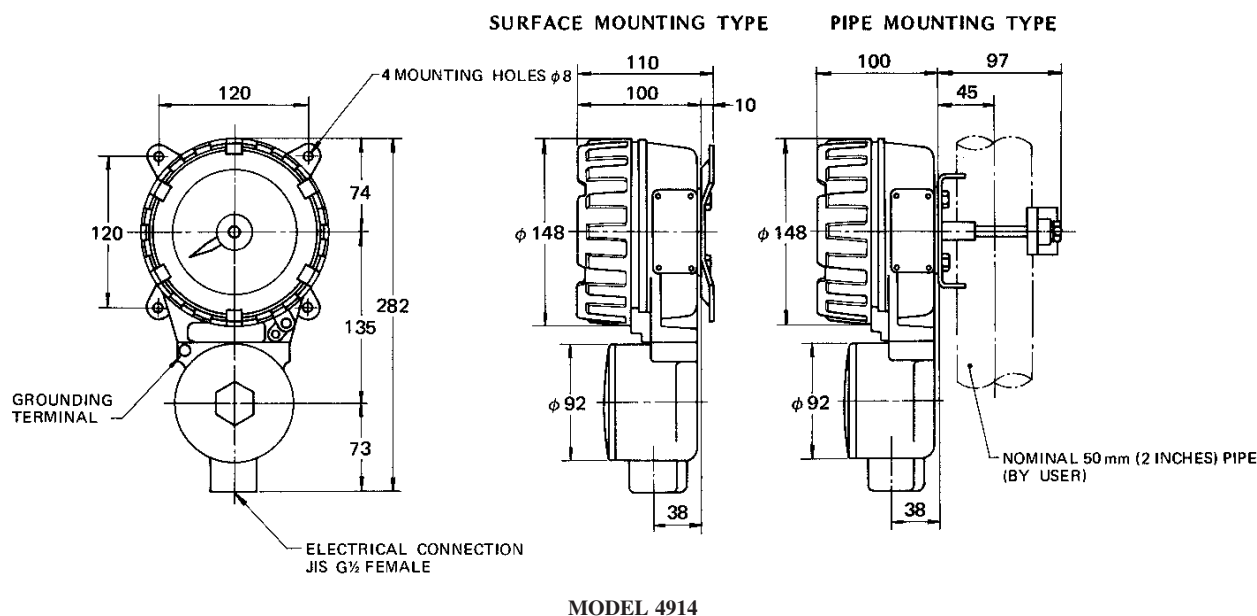
Option code: TP-W

## DIMENSIONS

Unit : mm



Unit : mm



## ORDERING INSTRUCTIONS

1. Model and suffix codes
2. Option codes
3. Scale range and unit markings desired
4. Tag Number